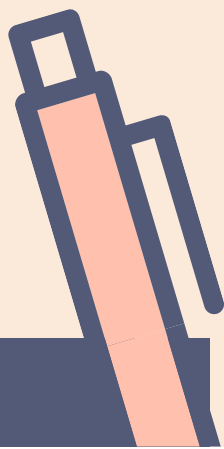
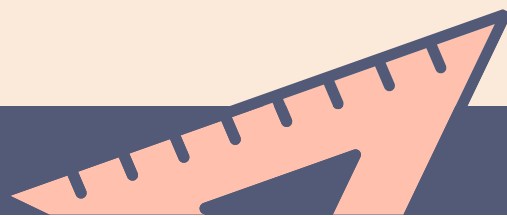
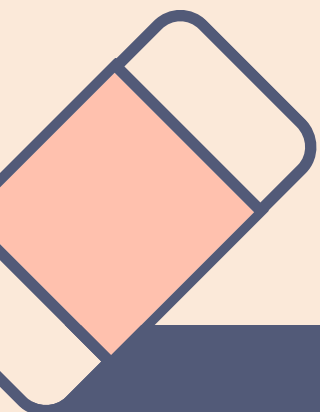


GILLIS EDUCATION

HOMESCHOOLING: BEST PRACTICES

10 TIPS FOR CREATING AN OPTIMAL HOMESCHOOLING ENVIRONMENT

WWW.GILLISEDUCTION.ORG





BEST PRACTICES:

1. Create a "classroom" environment that **fosters learning** and **encourages exploration**.
2. Set a **schedule** and articulate **standards** for school.
3. Develop your child's **work ethic** by explaining that school is their "job."
4. **Facilitate growth** -- intellectual and personal -- by creating structure, but allowing for some **choice**.
5. Teach your child about **consequences** - positive and negative; positive thinking and behaviors produce positive outcomes.
6. Instill a **collaborative spirit** by asking your child to participate in curriculum planning and **consistently communicating**.
7. Set daily and/or weekly **goals** that are measurable and achievable.
8. **Connect the dots**: help your child to see the relevance of what they are learning.
9. Remember that we are all motivated by **rewards**.
10. Practice **grace**; we are *all* doing our best and each day is a new opportunity to get it right.

For assistance with implementing these practices for your homeschooling program, or to take advantage of Gillis Education's homeschooling program, please email us: info@gilliseducation.org.

